

# Round Dance

A. L. Bianchi

(Latin)

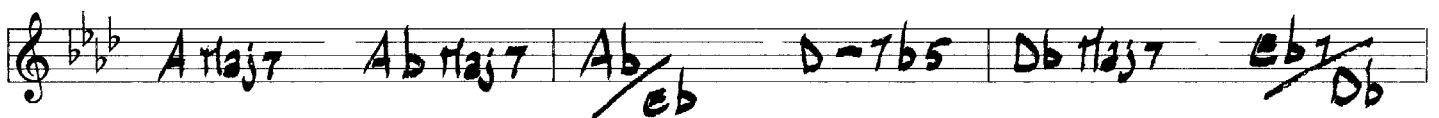
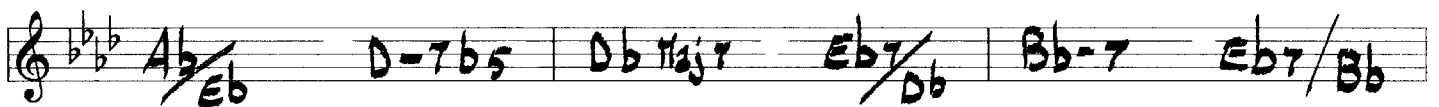
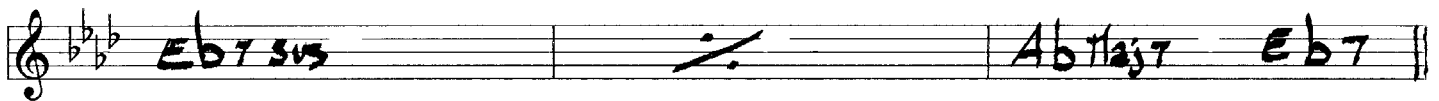
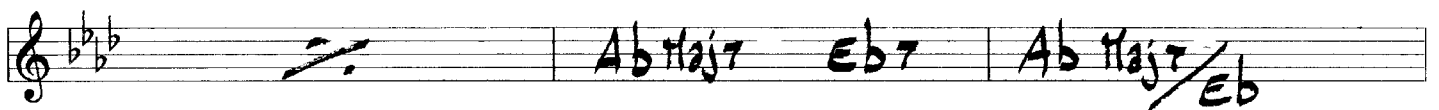
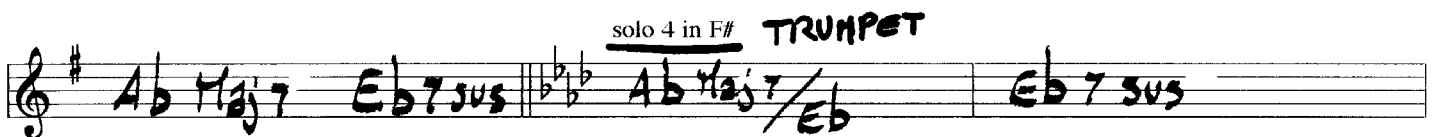
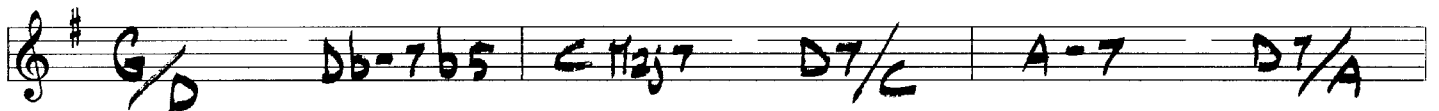
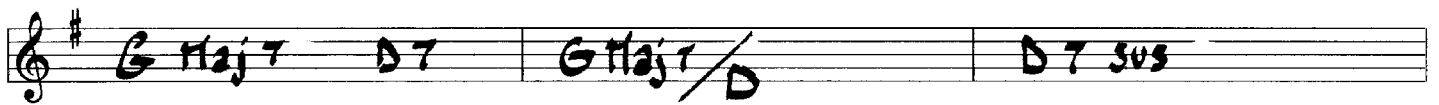
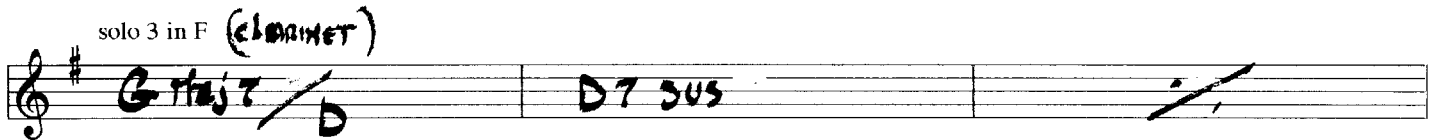
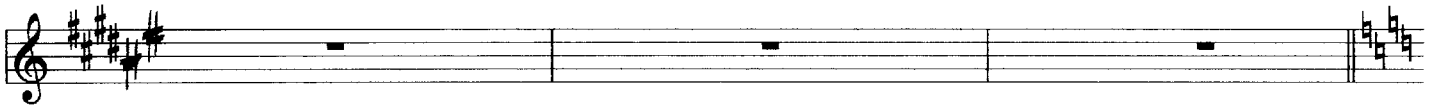
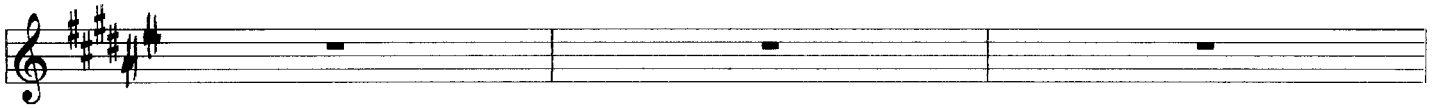
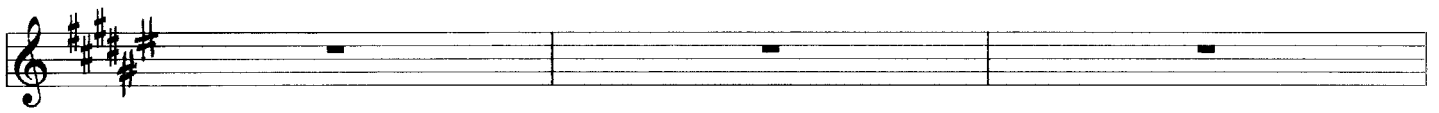
Trumpet Bb 1

$\text{♩} = 218$  tema

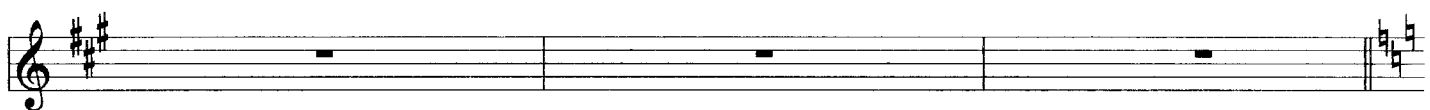
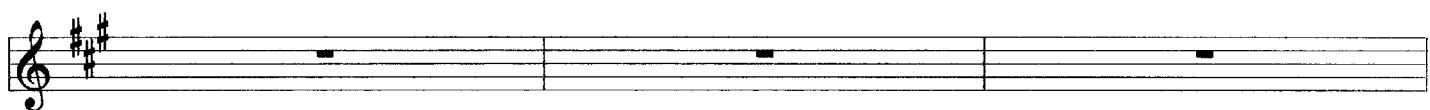
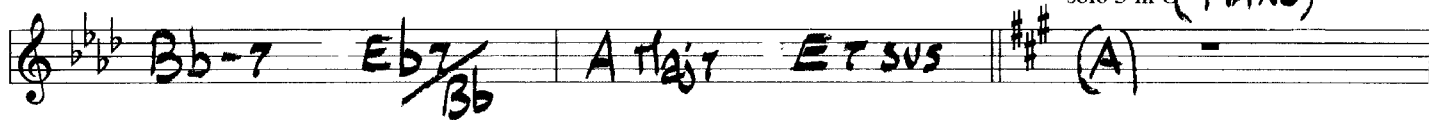
solo in Eb TRUMPET

Chord progression: F major 7, C7 sus, F major 7, C7, F major 7, C7 sus, F major 7, C7, G-7, C7/G, Gb major 7, F major 7, F major 7, B-7b5, Bb major 7, C7/Bb, G-7, C7/G, Gb major 7, C#7 sus, solo 2 in E (PIANO) (F#)

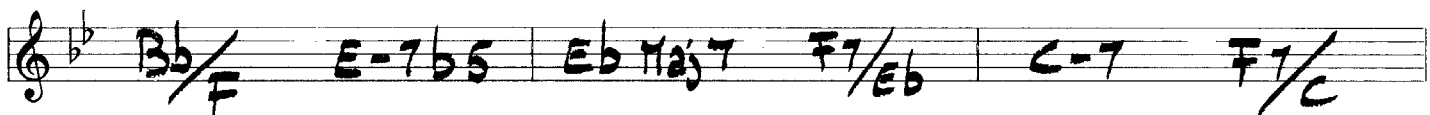
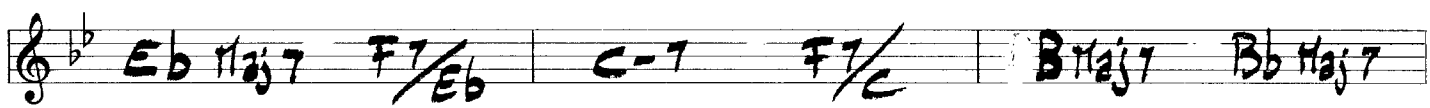
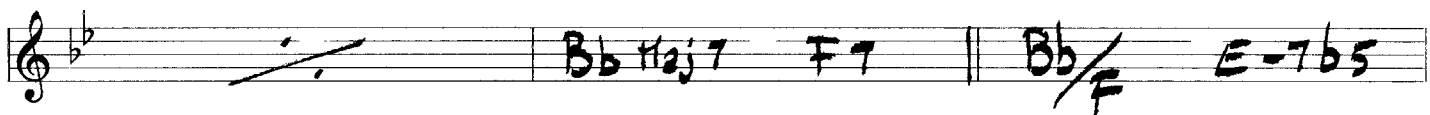
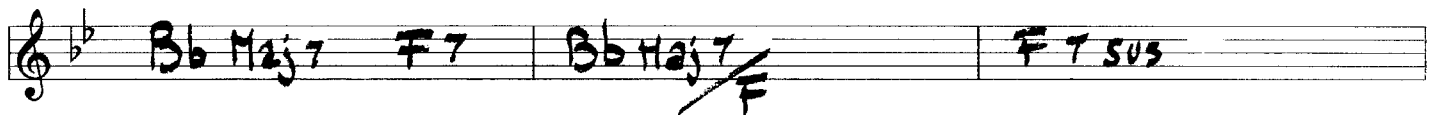
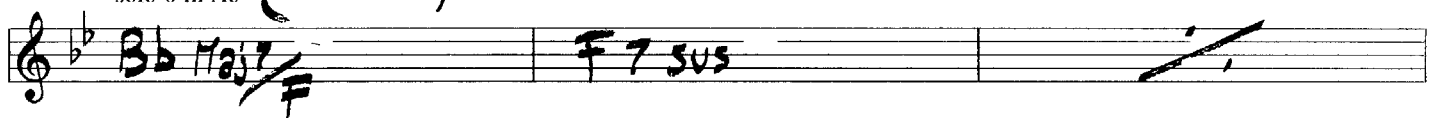
TP1-①



solo 5 in C (PIANO)



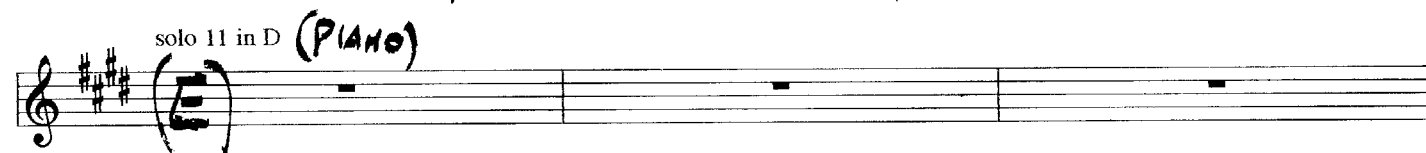
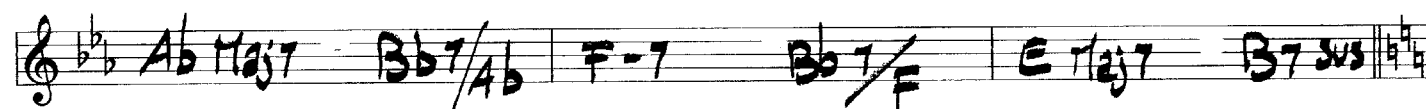
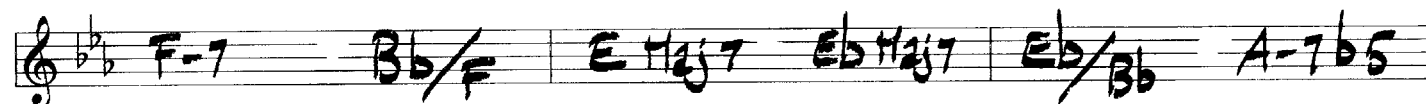
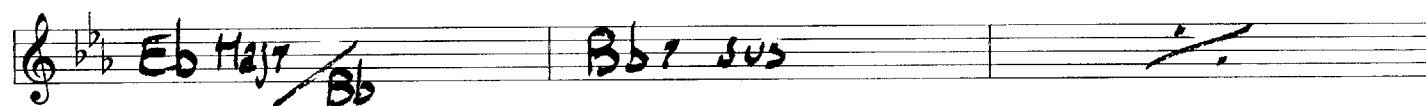
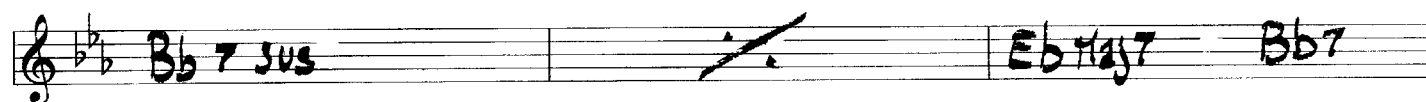
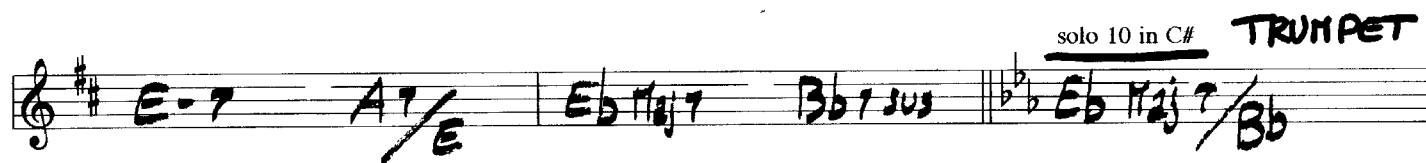
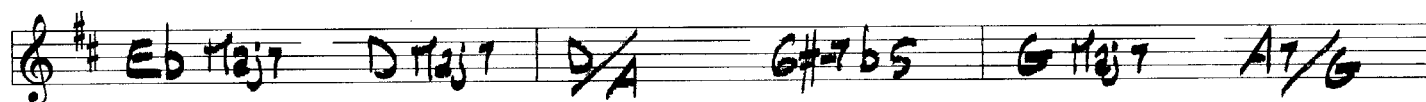
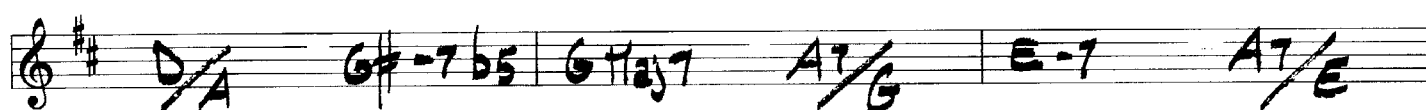
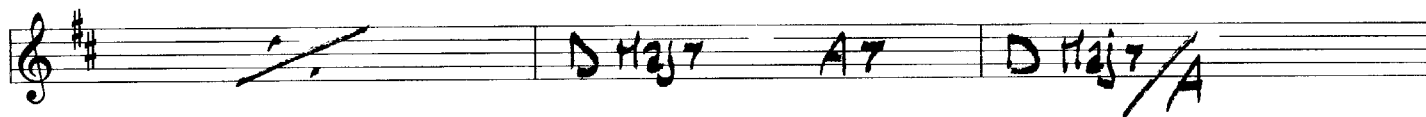
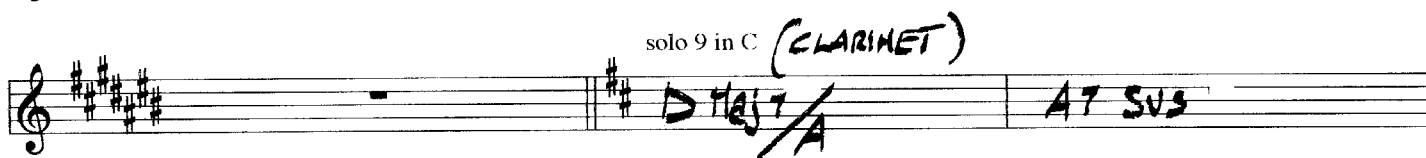
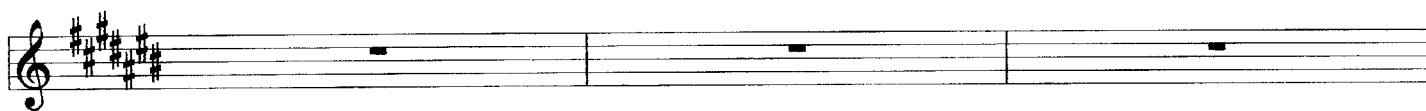
solo 6 in Ab (CLARINET)



tema in A



Handwritten musical score for Trumpet 1. The score is written in treble clef with a key signature of one sharp (F#). The first four staves contain a melody. The fifth staff begins a section labeled "solo 7 in Bb" for the TRUMPET, with a key signature change to Bb major (two flats). The following staves contain a series of chords: G7 sus, C Maj7 / G, G7 sus, C Maj7, G7, C / G, F#-7b5, F Maj7, G7 / F, D-7, G7 / D, Db Maj7, C Maj7, C / G, F#-7b5, F Maj7, G7 / F, D-7, G7 / D, Db Maj7, Ab7 sus. The final staff begins a section labeled "solo 8 in B (PIANO)" for the piano, with a key signature change to B major (two sharps). The score ends with three empty staves.



tema in Eb

FINALE

